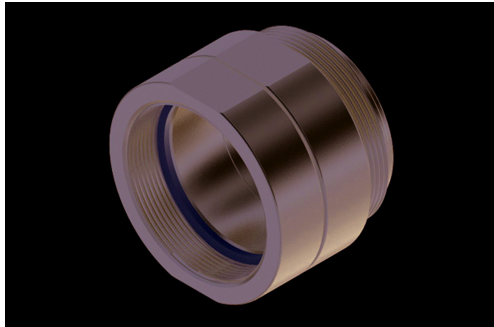


## Ihre Konfiguration



Material	Stainless steel V4A
Joint seal	Fluoro rubber (FKM)
Thread seal	Polytetrafluorethylene (PTFE)
AG inch	BSP 1 1/2"
IG 1 inch	G 1 1/2"
Series	DG
max. operating pressure	0,5 to 16 bar / 7 to 232 PSI
Operation temperature	-20°C to 150°C EPDM: -40°C to 150°C